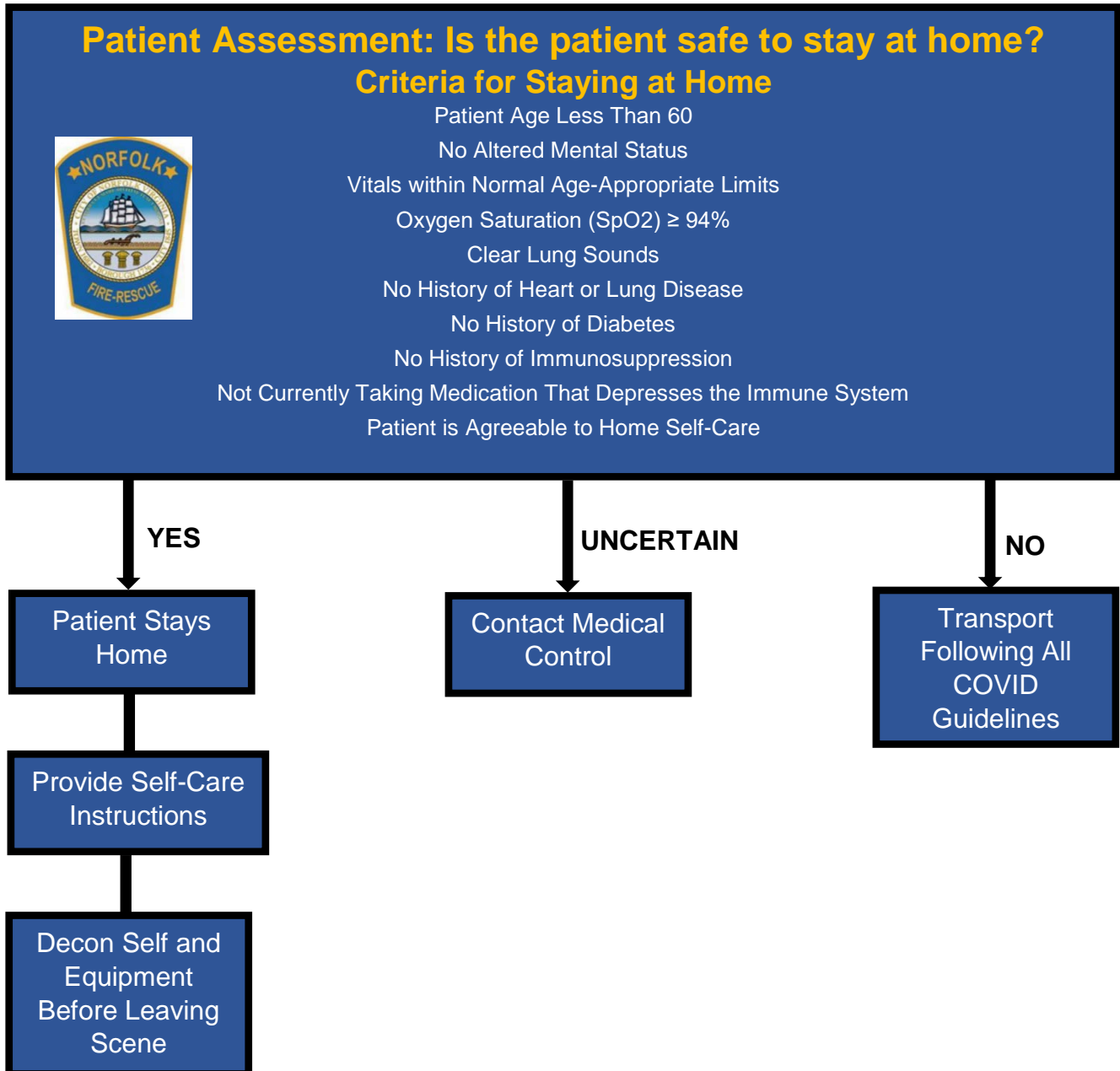




# COVID-19 Best Practice TRANSPORT GUIDELINES

(SHARED WITH PERMISSION OF NORFOLK FIRE-RESCUE)

The following guidelines should be used to assist with COVID-19 transport decisions.



## COVID-19 No Transport Documentation Guidelines

The run disposition **Treated/No Transport (Per Protocol)** **MUST** be selected.

COVID criteria question **MUST** be **YES**.